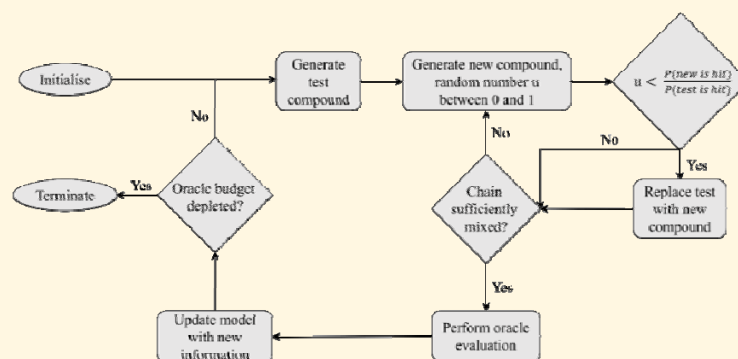
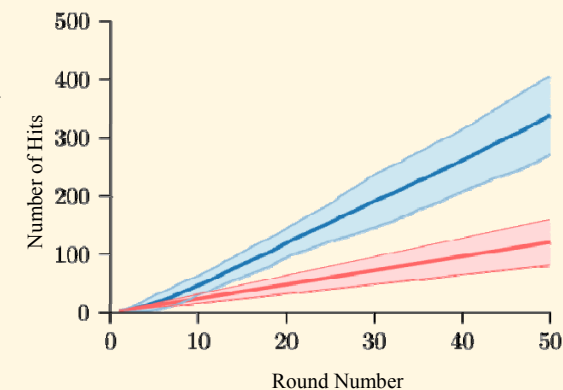


**Figure 1.** Showing extensive fibrosis in lung structure.

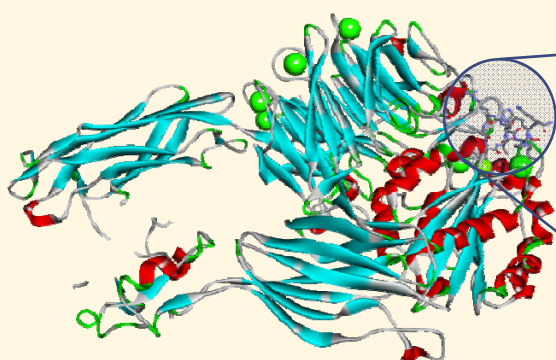
<https://www.nhlbi.nih.gov/health-topics/idiopathic-pulmonary-fibrosis>



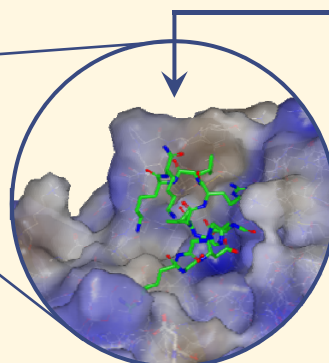
**Figure 5.** Adaptive Markov chain based machine learning algorithm.



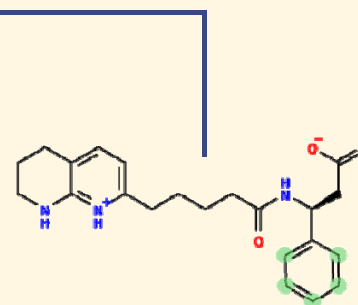
**Figure 6.** Correct construction curve (blue) compared with random search (red).



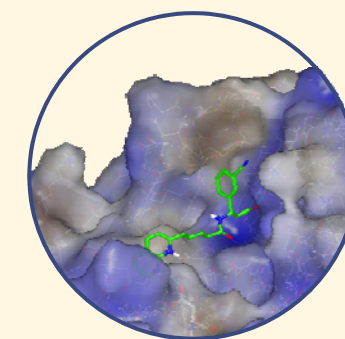
**Figure 2.** Head portion of  $\alpha_v\beta_6$  with natural ligand and active site marked.



**Figure 3.** The natural ligand, TGF- $\beta_1$  in the binding site.



**Figure 4.** The parent compound; available points of attachment in green



**Figure 7.** Image (OpenEye VIDA) of a docked, high scoring molecule.